

MagCore® Nucleic Acid Extraction Kits



MagCore® Automated Nucleic Acid Kits Selection Guide



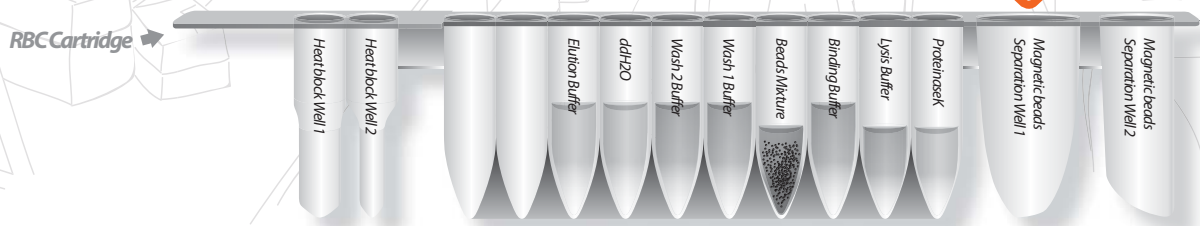
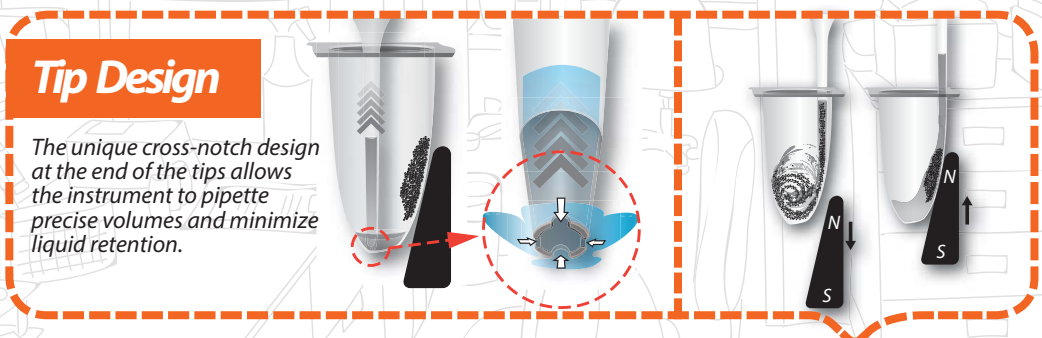
	Cat.No.	Cat.No.	Cat.No.	Cat.No.	Whole Blood	Buffy Coat	Plasma/Serum	Cell-free body fluids	Urine	Free circulating DNA	Cultured Cells	Animal Tissue	Plant Tissue	Bacterial/Sputum	Swab	FFPE	Stool	Forensic Specimens
Genomic DNA	101 MagCore® Genomic DNA Whole Blood Kit (Speedy installation)	MGB400-01 MGB400-01SP		MGB400-02 MGB400-02SP	■	■												
	102 MagCore® Genomic DNA Whole Blood Kit		MGB400-03 MGB400-03SP		MGB400-04 MGB400-04SP	■	■											
	104 MagCore® Genomic DNA Large Volume Whole Blood Kit (1.2 ml)				MGB1200 MGB1200SP	■												
	105 MagCore® Plasma DNA Extraction Kit (1.2 ml)				MPD1200 MPD1200SP		■	■		■								
	115 MagCore® Plasma DNA Extraction Kit (4 ml)				Coming Soon		■	■		■								
	106 MagCore® Genomic DNA Whole Blood Kit (For Genotyping)		MGB400-07 MGB400-07SP		MGB400-08 MGB400-08SP	■												
	110 MagCore® Cultured Cells DNA Kit		MCC-01 MCC-01SP		MCC-02 MCC-02SP						■							
	301 MagCore® Genomic DNA Plant Kit		MGP-01 MGP-01SP		MGP-02 MGP-02SP								■					
	401 MagCore® Genomic DNA Tissue Kit		MGT-01 MGT-01SP		MGT-02 MGT-02SP							■			■	■	■	■
	405 MagCore® Genomic DNA FFPE One-Step Kit		MGF-01 MGF-01SP	MGF-03 MGF-03SP												■		
	406 MagCore® Forensic DNA Direct Kit			MFC-03SP												■		■
	502 MagCore® Genomic DNA Bacterial Kit		MBB-01 MBB-01SP		MBB-02 MBB-02SP										■			
	Viral Nucleic Acids	201 MagCore® Viral Nucleic Acid Extraction Kit	MVN400-01 MVN400-01SP		MVN400-02 MVN400-02SP			■	■	■								
202 MagCore® Viral Nucleic Acid Extraction Kit (Low PCR Inhibition)			MVN400-03 MVN400-03SP		MVN400-04 MVN400-04SP		■	■	■									
210 MagCore® Viral Nucleic Acid Large Volume Extraction Kit (2.4 ml)					MVN2400		■	■	■									
211 MagCore® Viral Nucleic Acid Large Volume Extraction Kit (1.2 ml)					MVN1200 MVN1200SP		■	■	■									
Total RNA	601 MagCore® Total RNA Whole Blood Kit		MRN-01 MRN-01SP		MRN-02 MRN-02SP	■												
	610 MagCore® Total RNA Cultured Cells Kit		MRC-01 MRC-01SP		MRC-02 MRC-02SP						■							
	631 MagCore® triXact RNA Kit	MRX-01 MRX-01SP		MRX-03 MRX-03SP		■					■	■						

MagCore® Cartridge Design and Extraction Principle

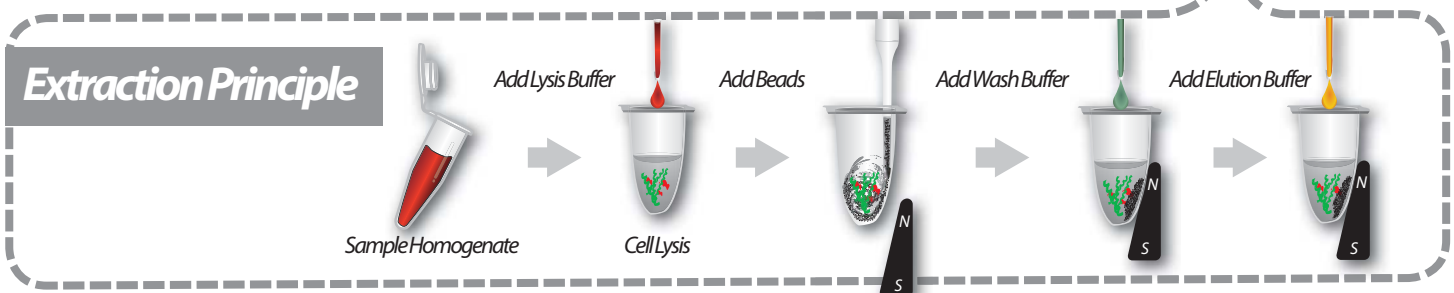


MagCore® cartridges include all reagents needed for purifications, no additional handling is necessary. We minimize any possible contamination and spillage with an automated piercing step for our pre-sealed cartridges. RBC patented Heating Well and Separation Well in the cartridge provide a strong circular force to ensure efficient binding and washing during the extraction procedure.

MagCore® Nucleic Acid Extraction Kits contain all reagents and consumables needed for 36, 72 or 96 nucleic acid isolation reactions. The consumables consist of reagent cartridges, individually packaged tip sets, sample tubes and elution tubes.

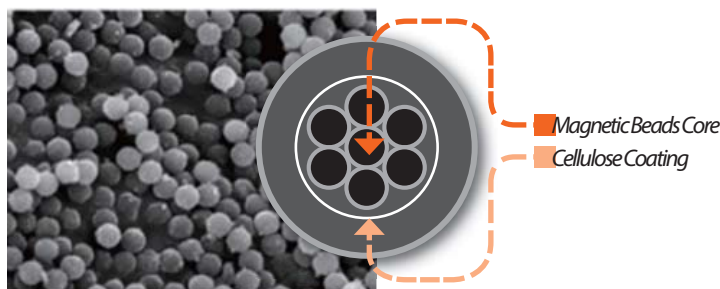


Each cartridge has 14 positions available with 10 sealed wells and 2 heating chambers.



MagCore® Worldwide Patented Magnetic Beads

Our design: multiple core inside, cellulose coating.



Particlerange	~20µm (in water)
VSM	~40emu/g
Cellulose%	~50%
Core size	~150nm
Core VSM	~80emu/g
Core material	Fe ₃ O ₄
Bead Binding capacity	1 mg beads bind ~300µg <i>Calthymus</i> DNA ~350µg human placenta DNA



FDA (10055336) registered and CE-IVD certified (Instruments & Reagents)
Manufactured in accordance with quality system requirements that comply with ISO 13485 standards and QSR



MagCore® Nucleic Acid Extraction Kits



For extraction of free circulating DNA from human plasma or serum

MagCore® Plasma DNA Extraction Kit is designed for purifying free circulating DNA from human serum or plasma using MagCore® automated extraction systems. The kit contains all required reagents and labware for automated purification based on magnetic-particle technology. Reagents necessary for a complete process are supplied and pre-filled in the cartridges, which can be easily loaded into the MagCore® instrument.

105

MagCore® Plasma DNA Extraction Kit (1.2 ml)



Features

1. High performance of purified DNA in downstream applications such as qPCR.
2. Efficient recovery of fragmented DNA
3. Pre-filled and sealed buffer cartridges prevent contamination.
4. No phenol or chloroform extraction
5. Efficient removal of contaminants and inhibitors.

Applications

The MagCore® Plasma DNA Extraction Kit efficiently purifies free circulating DNA.

Sample types include:

1. Human plasma
2. Human serum

High quality DNA available for various downstream applications, including:

1. PCR and real-time PCR
2. Next Generation Sequencing (NGS)

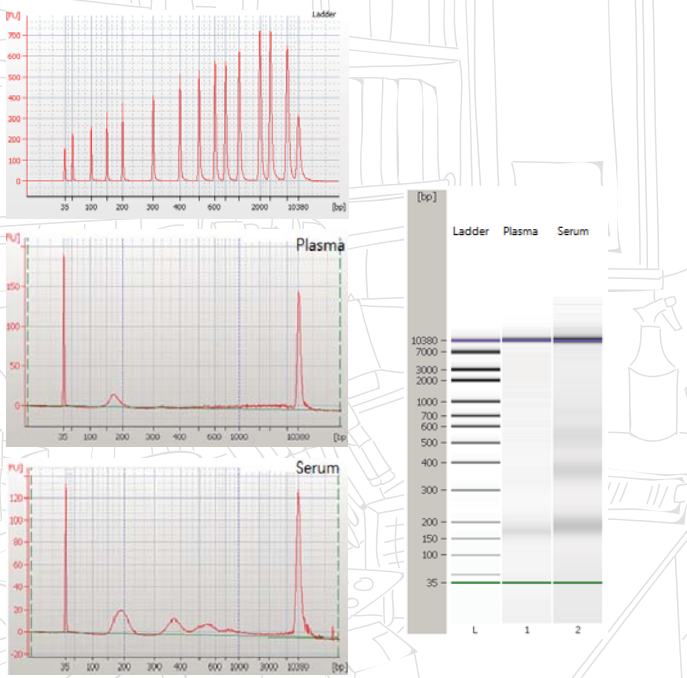


Performance

High-quality of free DNA from plasma and serum

Quality and quantity analysis of the free DNA by Agilent Bioanalyzer 2100. Superior quality DNA are available from plasma and serum samples by using MagCore® products.

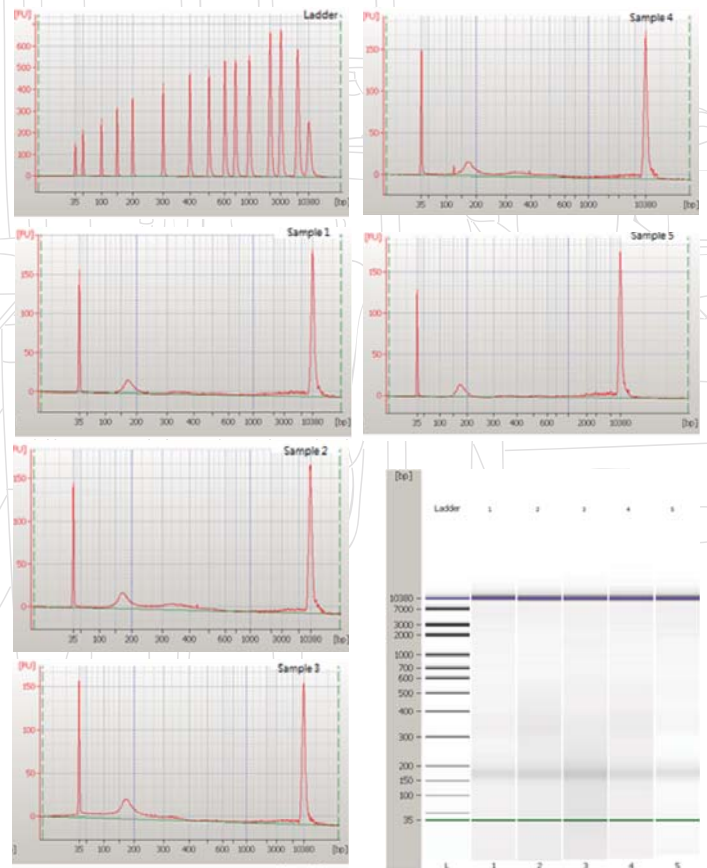
Sample ID	Sample type	Target Conc. (pg/μl)	35 bp marker Conc. (pg/μl)	10380 bp marker Conc. (pg/μl)
1	Human plasma	77.94	125	75
2	Human serum	138.48	125	75



High stability of free DNA

Quality and quantity analysis of the free DNA by Agilent 2100 Bioanalyzer. It is shown by the evidence that free DNA of high quality and stability is possible to extract from 5 different plasma samples by using MagCore® products.

Sample ID	Sample type	Target Conc. (pg/μl)	35 bp marker conc. (pg/μl)	10380 bp marker Conc. (pg/μl)
1	Human plasma	65.95	125	75
2	Human plasma	76.63	125	75
3	Human plasma	87.22	125	75
4	Human plasma	57.96	125	75
5	Human plasma	60.53	125	75



MagCore® Automated Nucleic Acid Kits Specification

Cartridge Code	MagCore® Super/HF16 Plus/Plus II				MagCore® HF16/Compact/HF48			
	Cat.No.	Cat.No.	Cat.No.	Running Time	Cat.No.	Cat.No.	Cat.No.	Running Time
	36preps	72preps	96preps		36preps	72preps	96preps	
105	MagCore® Plasma DNA Extraction Kit (1.2 ml)							
	For 1200μl sample volumes. Contents: Pre-Filled Cartridges, Proteinase K, PK Storage Buffer, Disposable Tip & Holder Sets, Sample Tubes, Elution Tubes Shelf life: 18 months							
		MPD1200SP		74 min (sample volume: 1200 μl) *optical detection is not provided		MPD1200		70 min (sample volume: 1200 μl)

Enzyme Selection Guide

Product	Contents	Cat. No.
Proteinase K Set	11 mg Proteinase K, 1.25 ml PK Storage Buffer	PK011
RNase A	50 μl RNase A (50mg/ml)	RN050
	130 μl RNase A (50mg/ml)	RN130



FDA (10055336) registered and CE-IVD certified (Instruments & Reagents)
Manufactured in accordance with quality system requirements that comply with ISO 13485 standards and QSR

